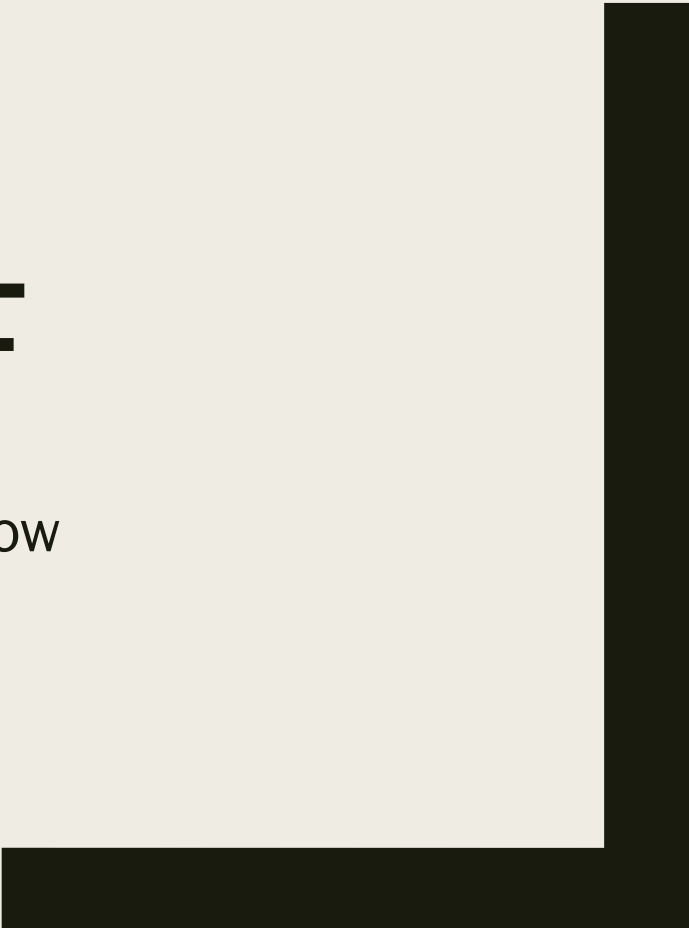




THE SCRCF

Everything you always wanted to know
but were afraid to ask



The BIG Picture

Rotary Club of Summit County

- IN
 - Dues
- OUT
 - Meetings(Bacon)
 - Admin
 - RI Dues

Rotary International

- IN
 - Paul Harris contributions
 - Polio Plus
- OUT
 - International Projects
 - Grants

Summit County Rotary Charitable Fund

- IN
 - Fundraisers/sponsors
 - Donations
 - Endowment
- OUT
 - Our club's charitable giving and projects

Summit County Rotary Charitable Fund Board Members



Brian
Blankenmeister
President



Rich James



Jeanne Bistranin
Secretary



Rick Williams



Diane Monaghan
Treasurer



Dave Murray



Woody Woodland

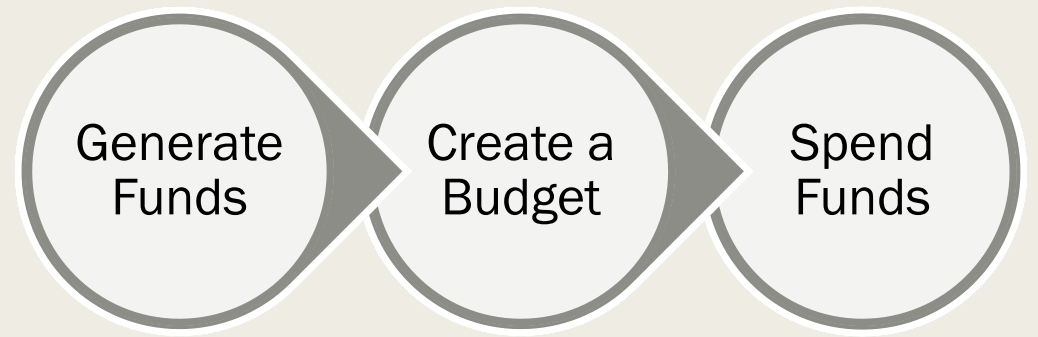
SCRCF Board – what do we do?

- Oversee the management of the Fund
- Review the proposed budget
- Maintain and follow our bylaws
- Protect our 501c-3 status

What we don't do

- Create the budget for charitable giving
- Decide which projects are funded
- Run or decide on fundraisers

So, How does
the Charitable
Fund work?



Where does the money come from?

- Fundraisers



Where does the money come from?

- Fundraisers
- Sponsors

CORPORATE SPONSORS



Where does the money come from?

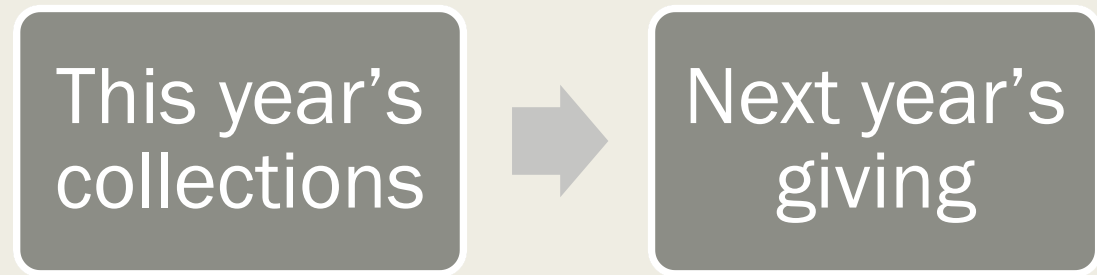
- Fundraisers
- Sponsors
- Direct Donations
- Endowment fund
- Program Specific Donations



Where does the money come from?

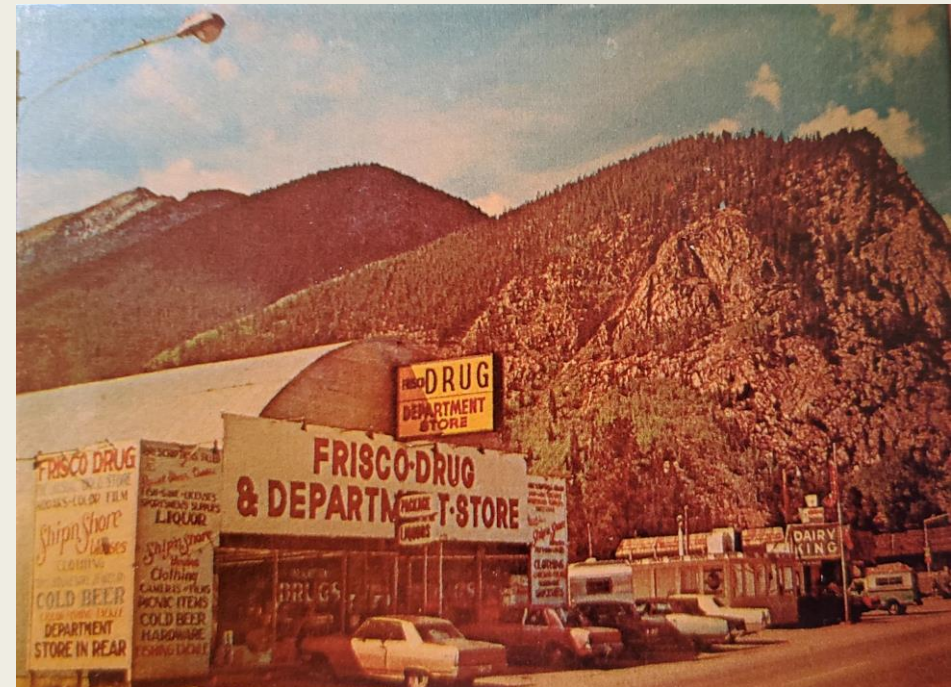
- Fundraisers
- Sponsors
- Direct Donations
- Endowment fund

- Program Specific Donations



The Endowment Fund: A Brief History

- Started with a donated coin collection from Bo Bogan
- Growth campaign to reach 1 million
- Literacy Fund in Mary Johnston's honor
- Current status:
 - \$1,635,031 *Main Fund*
 - \$230,060 *Literacy*
- Sustainable giving!
- Formula to determine yearly contribution
$$\sqrt{-1} \ 2^3 \sum \pi = \text{delicious!}$$



Where did it come from in 2021?

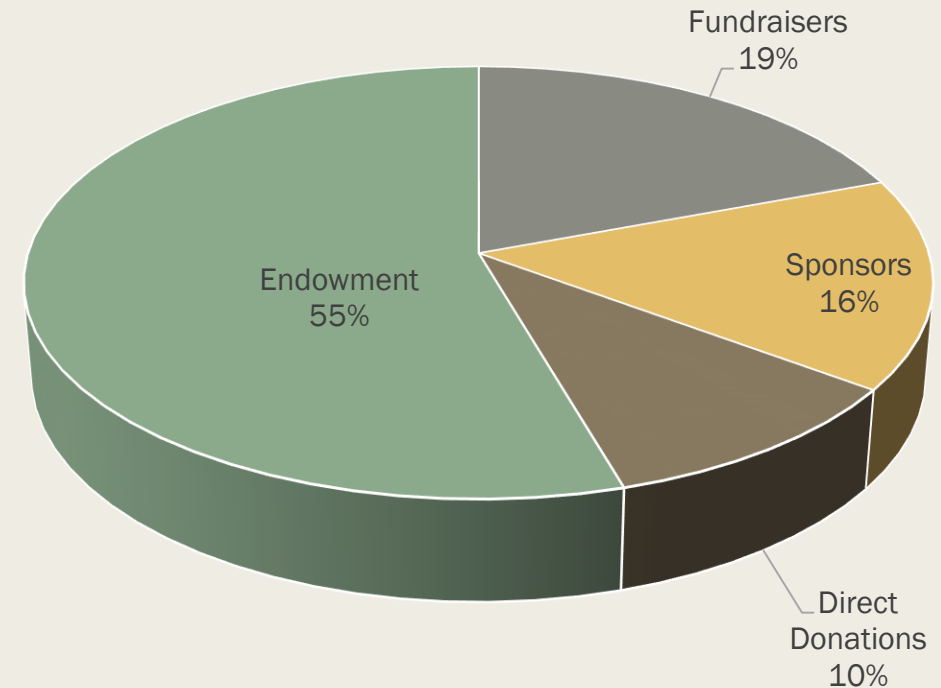
\$368,419

- Fundraisers \$46,013
- Sponsors \$37,600
- Direct Donations \$24,707
- Endowment fund \$129,853

TOTAL = \$238,173

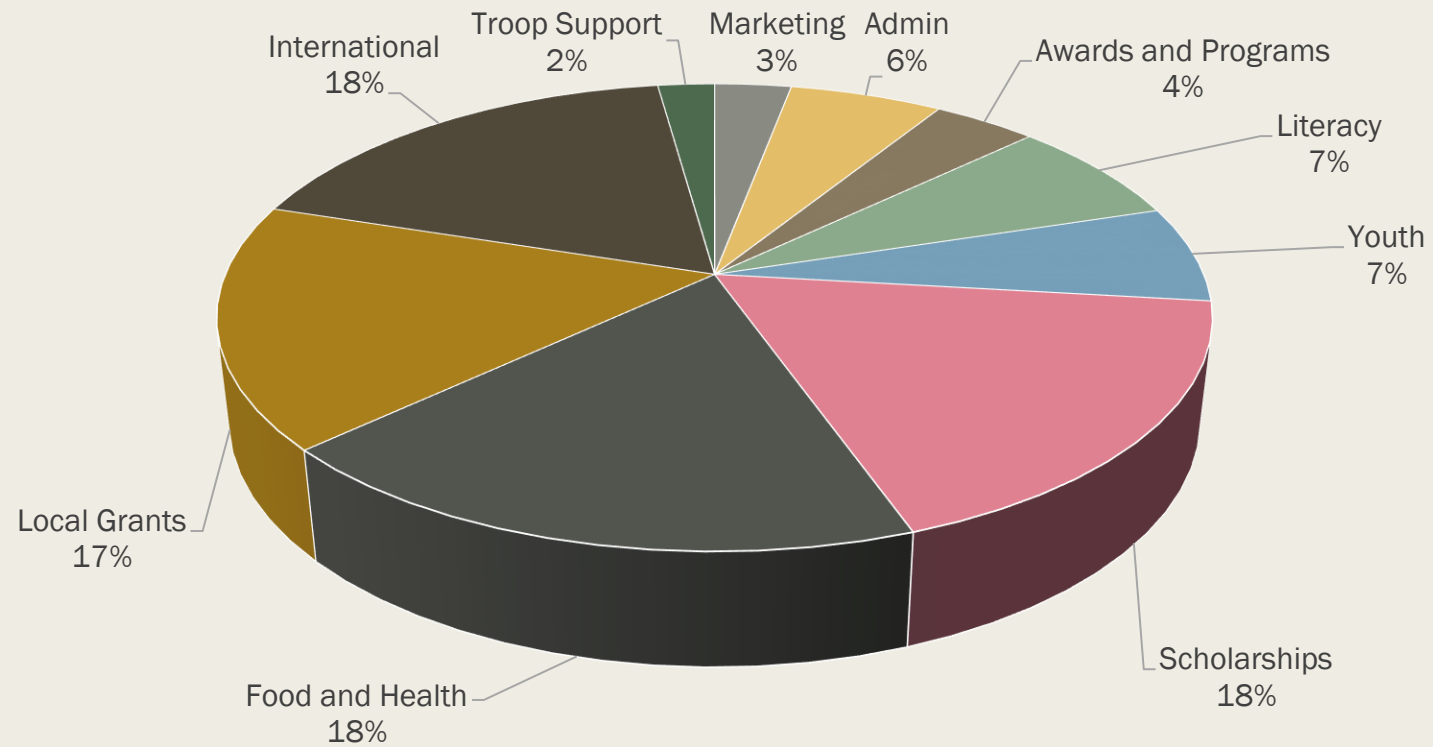
- Program Specific Donations \$130,246
 - *Community Dinner* \$50,750
 - *Adopt and Angel* \$47,060
 - *Shelter Box* \$11,452

GRAND TOTAL = \$368,419

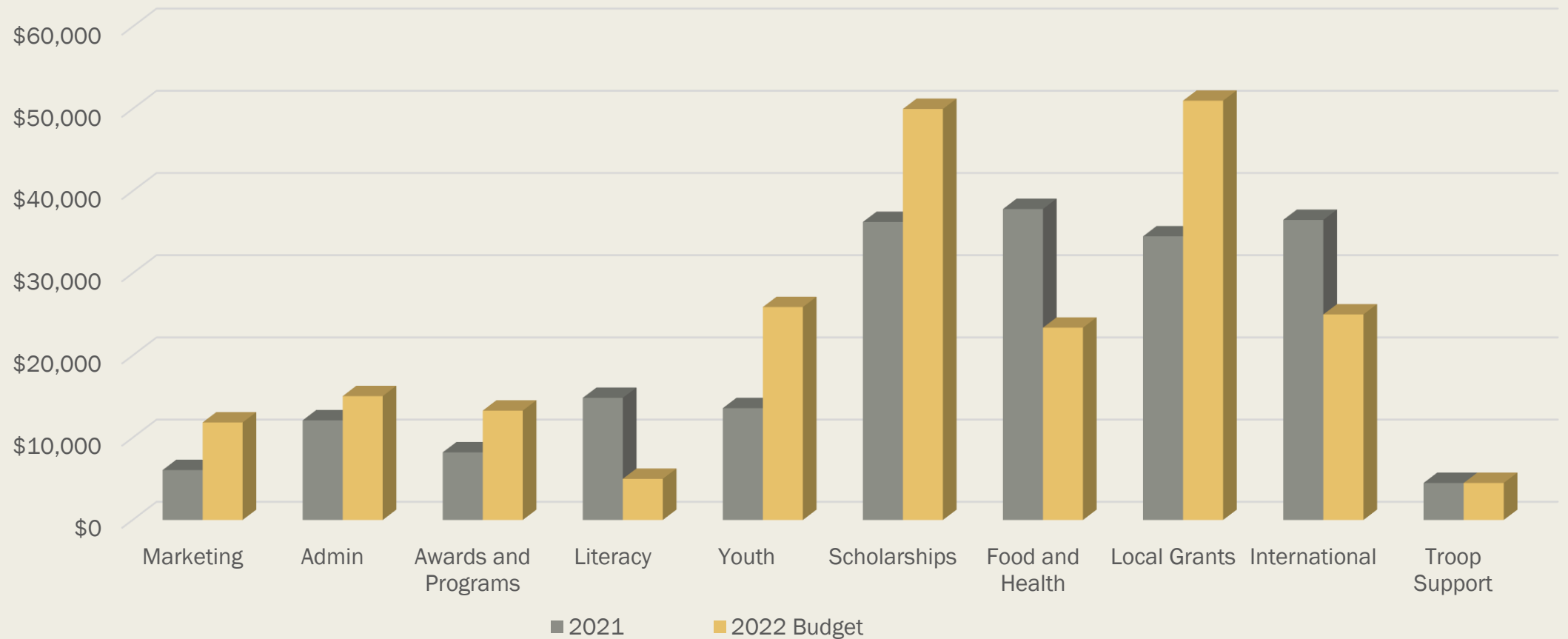


And, where did it go?

\$204,447 in 2021



2021 compared to 2022 Budget



How do I get
more involved
in where the
money comes
from and
where it
goes?

- Get to know your Board Members
- Become a Board Member!
- Join a super fun Board Meeting
- Participate in Fundraisers
- Did I mention Board members/meetings?
- Join the financial Visioning team

QUESTIONS?

(If we run out of time, may I suggest joining a Board Meeting)

