



www.jgrotary.com/2aweblog

JANUARY 18, 2018

Juneau-Gastineau Rotary

Channeler

Established 1988

Today's Greeter

Kevin Ritchie

Next Week

Ron King

Today's Program

Juneau Legislative Delegation

Senator Dennis Egan

Rep. Sam Kito III

Rep. Justin Parrish

January 25

Dave Scanlon

Eaglecrest Manager

February 1

Kirk Smith

U.S. Immigration Policy

February 8

Club Assembly



Harry Kielsing

District 5010 Governor

Ian Riseley

Rotary International President



The precipice approaches

The second session of the 20th Alaska Legislature convened Tuesday and the elephant still lumbering the capitol halls – after four special sessions last year -- is how Alaska's next spending plan will be paid for. The current budget of \$4.9 billion (signed by the governor June 30, one day before a government shut down) has a \$2.5 billion hole, filled – again – by the Constitutional Budget Reserve. The CBR does not have enough in it to fix a similar gap in the next budget. Alaska is down to the last of its savings and the legislature remains at impasse.

In 2008, the price of Alaska crude peaked at \$156 per barrel. Today it stands at about \$62. Nearly ninety percent of the state's revenue is derived from oil through leases, royalties, and taxes. Since 2013, state spending has been reduced by nearly 30 percent, from about \$7 billion. The Republican-controlled Senate supports drawing from the Permanent Fund and does not want to consider taxes unless more is cut from the budget. Juneau Senator Dennis Egan, top, a Democrat appointed in 2009, is in a six-person minority in that 20-member body.

Meanwhile, Juneau's two representatives, Sam Kito III (middle) and Justin Parrish (bottom) are part of a 22-member bi-partisan coalition that controls the House. That majority opposes using the Permanent Fund without pairing it with a progressive income tax. Kito was appointed to the seat in 2014 and chairs the Labor and Commerce Committee. Parrish is a freshman who co-chairs the Community and Regional Affairs Committee.

The entire delegation is up for re-election this year; only Parrish has committed to run again.

**Thursday
January 25**

4-6:15 pm
Glory Hole
Meal Prep
It's a make up!

**Friday
January 26**

7 am
Prospector
Board Meeting
It's a make up!

**Saturday
January 27**

6 – 9 pm
Peratrovich Hall
Baconfest
Hosted by GV Rotary
\$30; must be 21

**BE A
ROTARY
CHAMPION
THRU VOCATIONAL
SERVICE**



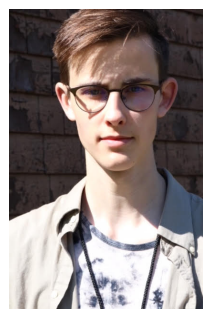


Thanks Jill Ramiel for photos!



Club's 2018-2019 outbound, Jaeden West, will head to Belgium

JGR's 2018-2019 outbound learned last weekend that he will be living in Belgium. About 40 youth – current inbounds, rebounds from last year, and future outbounds – gathered in Wasilla for the District 5010 Winter Orientation. That's when it's revealed to what countries pending outbounds are assigned. Jaeden West, a JDHS sophomore, will be going to Belgium. Jaeden, at right and top left, is the son of Christy Long and Larry West. Youth participated in a variety of activities to help prepare them for the exchange. Rebounds wore gray (check out JGR's rebound, Dakota Purcell, top center, in the top right photo of the Juneau contingent); outbounds were green (although Jaeden's in black on the middle left) and current inbounds wore red (see Erik, second from right, in the front row). Jill Ramiel, the club's Youth Exchange Officer, accompanied JGR-sponsored teens to the event.



January - Vocational Service / February - Peace & Conflict Resolution / March - Water & Sanitation
 April - Maternal & Child Health / May - Youth Services / June - Rotary Fellowships / July - Leadership
 August - Membership / September - Education & Literacy / October - Economic & Community Development
 November - Foundation / December - Disease Prevention and Treatment

2017-2018 Board & Committees

President
James Bibb

President-Elect
Kim Kiefer

Past President
Pam Varni

Vice President
Julie Olson

Secretary
Jackie Timothy

Treasurer
Dan Bleidorn

Administration
Linda Bleggen

Community Service
Candy Behrends

Vocational Service
Rosemary Hagevig

Youth
Kevin Ritchie

Youth Exchange
Jill Ramiel
Kirk Smith

Interact Advisor
John McConnochie

Membership
John Pugh

International
Nico Bus

Foundation
Colleen Torrence

Sergeant-at-Arms
Doug Eckland

Public Relations
Mila Cosgrove

Program
Amy Lujan, John Cannon
Rosemary Hagevig

Web Manager
Claudette Kreuzenstein

Newsletter Editor
Laury Scandling