



# MARK 2 Wheelchair

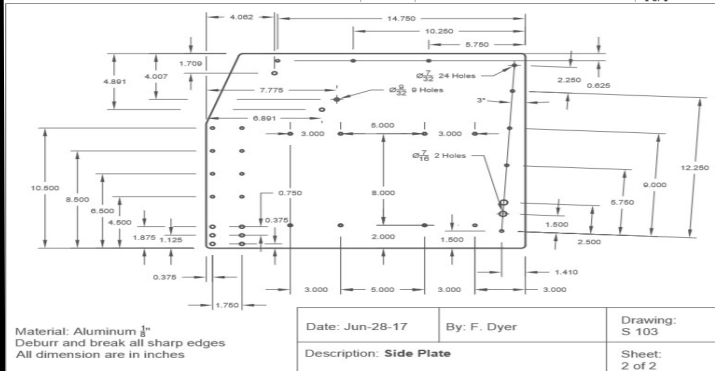
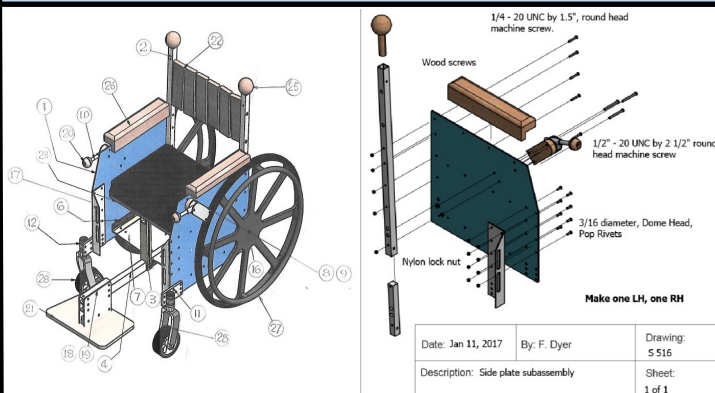
*"Simplified Wheelchair for Developing Economies ... Make This Chair in Your Country".*

The Rotary Club of Burlington is pleased to showcase their Mark 2 wheelchair at the Rotary International Convention. After many years of design and a recent partnership with McMaster University, we have full design and manufacturing information available for interested clubs. All this is free and available online at

<http://wheelchair.rotaryburlington.com>



*"The goal was to design a basic, functional wheelchair that can be produced locally in low-tech fabrication shops using your materials, components and labour."*



Reason behind the unique design:

**User of Wood:** Most developing countries have an established furniture industry and a source of hardwoods

**Wooden Slats:** The slatted back will fold and is very comfortable

**Removable Footrest:** The center extension on this chair provides a mounting structure for custom-made leg supports

**Open Structure of the Chassis:** The area under the seat provides an open box that can carry personal or household items

**Red Wooden Brake Knobs:** Brake actuation is ergonomically designed in a handy location and visible

Rotary Club of Burlington, Ontario, Canada

Contact: [rotarycsecburl@cogeco.ca](mailto:rotarycsecburl@cogeco.ca)